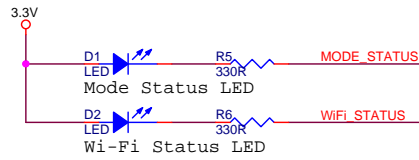
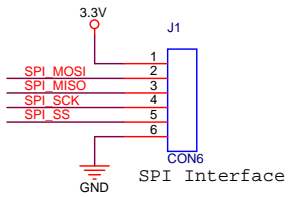
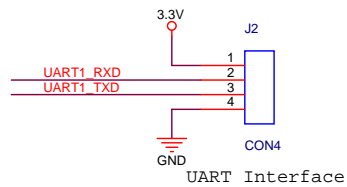
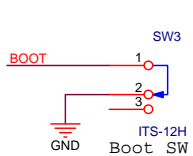
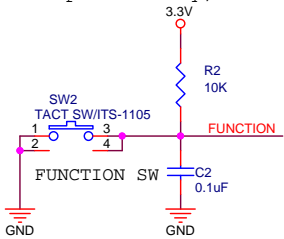


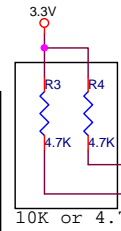
MIC811SUY is reset ic.
 Instead have to mount R11 if not mount U2.



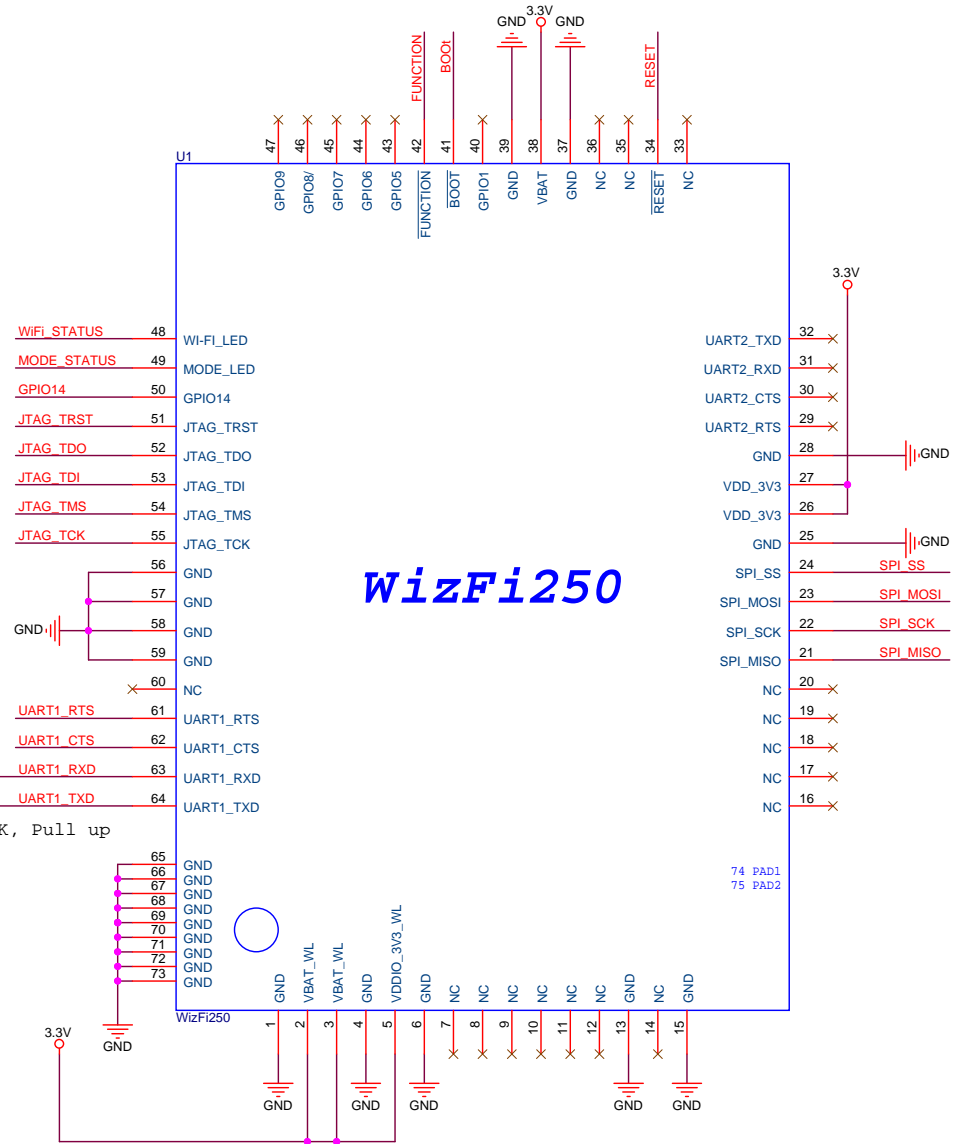
This circuit needs when you updating firmware.
 You cannot do the firmware upgrace, if there is no this circuit.
 WIZnet don't accept liability, if this situation happens.



Boot PIN Floating or High : Run Mode
 Boot PIN Low : Boot Mode
 Please monitor the signal of BOOT PIN of your MCU.
 Please stop the UART communication between WizFi250 and your MCU, when BOOT's input value is "LOW".



10K or 4.7K, Pull up



WIZnet		
Title WizFi250 Ref.Schematic		
Size B	Document Number WizFi250 Ref.Schematic	Rev <RevCode>
Date:	Monday, December 09, 2013	Sheet 1 of 1