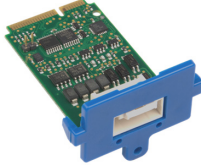


Welcome

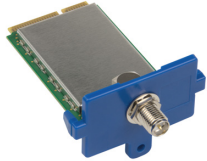
Thank you for purchasing an accessory card for your device. Accessory cards offer a variety of flexible, application specific interfaces that you can customize to your individual needs.

Types of Accessory Cards



GPIO:

This accessory card provides a variety of General Purpose IO functionality to accessory card based hardware platforms. It enables three analog inputs, four digital inputs, and four digital outputs.



LoRa:

This accessory card provides long range RF support using Semtech's LoRa radio technology. The gateway uses this accessory card to connect MultiTech's mDot products to the cloud.



MFSER:

These accessory cards are Multi-Function Serial Accessory cards. They provide standard serial RS 232/422/485 communication for a number of industrial applications using a variety of legacy devices.



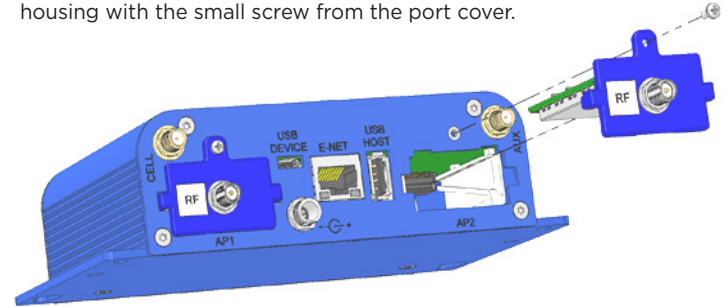
Installing the Accessory Card

To install the accessory card you will need:

- Accessory card
- Phillips screwdriver

To install the accessory card:

- Disconnect power to the device, if necessary.
- At the back of the housing, locate the opening where you want the accessory card to be installed. The accessory card can be installed in the AP1 or AP2 opening. Remove the port cover and retain the screw for attaching the accessory card.
- Slide the card into the opening and push until you feel the card connector seat in the internal connector.
- Use a small Phillips screwdriver to attach the card bracket to the housing with the small screw from the port cover.



Additional Information

Additional information for each accessory card can be found at:

www.multitech.net/developer/accessory-cards

Accessory Card Quick Start Guide

82101400L



Copyright

This publication may not be reproduced, in whole or in part, without the specific and express prior written permission signed by an executive officer of Multi-Tech Systems, Inc.

All rights reserved. Copyright © 2015 by Multi-Tech Systems, Inc.

Multi-Tech Systems, Inc. makes no representations or warranties, whether express, implied or by estoppels, with respect to the content, information, material and recommendations herein and specifically disclaims any implied warranties of merchantability, fitness for any particular purpose and non-infringement.

Multi-Tech Systems, Inc. reserves the right to revise this publication and to make changes from time to time in the content hereof without obligation of Multi-Tech Systems, Inc. to notify any person or organization of such revisions or changes.

Trademarks

MultiTech, MultiConnect, and the MultiTech logo are registered trademarks of Multi-Tech Systems, Inc. All other brand and product names are trademarks or registered trademarks of their respective companies.

Multi-Tech Systems, Inc.

2205 Woodale Drive
Mounds View, Minnesota 55112 U.S.A.
Phone: 763-785-3500 or 800-328-9717
Fax: 763-785-9874

Support

Business Hours:
M-F, 9am to 5pm CT

Europe, Middle East, Africa:
support@multitech.co.uk
+(44) 118 959 7774

Knowledge Base

<http://www.multitech.com/kb.go>



U.S., Canada, all others:
support@multitech.com
(800) 972-2439 or (763) 717-5863

Support Portal

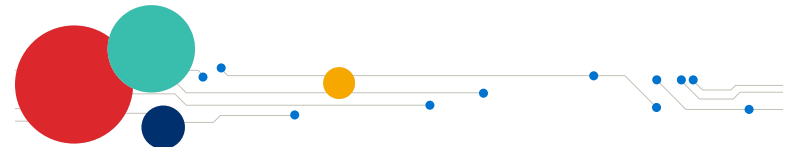
<https://support.multitech.com>



www.bocon.com.cn 010-51663110

Accessory Card

Quick Start



www.multitech.com