



Your LoRa Hardware Partner

BOCON
博控自动化

inquiry@bocon.com.cn
www.bocon.com.cn
Tel: 010-51663110

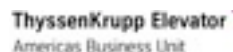
MultiTech



- 45+ years focused on Machine-to-Machine (M2M) Communications
- 80+ patents
- 22+ millions devices, thousands of customers worldwide
- U.S. based Engineering, Manufacturing, Certifications and Support
- Top 100 M2M Company
- The “Go To” Partner for your Connected Strategy
- Product Design and Certification Services – Connected Development



Brands That Trust MultiTech

AVAYAMedtronicimagination at workHoneywellCoca-ColaUnited TechnologiesFedExSun
microsystemsBoston
Scientific
Advancing science for life™Johnson
ControlsPROTECHSIEMENSEATON
Powering Business WorldwideHACHFresenius Medical CareRAIN BIRDtycoPEPSICOHARRISPHILIPS
sense and simplicityLandis
Gyr
manage energy betterEMERSONAPC
by Schneider ElectricNCRLat-LonDELLPitney BowesTRANExeroxDOOSANBOSCH
Invented for lifeDAKTRONICSThyssenKrupp Elevator
Americas Business Unithp
invent

Key Alliances



MultiTech Key Vertical Markets



Transportation

Transportation

- Asset Tracking
- Fleet Management
- Parking Meters/Terminals
- Driver behavior



Energy

Energy

- Energy Monitoring
- Smart Grid
- Renewables/Wind
- Car Charging Stations
- Utility Controls
- Environmental Monitoring



Healthcare

Healthcare

- Home & Mobile
- Tele-Monitoring
- Disease Management
- Assisted Living



Financial

Finance

- ATM
- POS
- Temporary Kiosks
- Vending Machines
- Cash Registers



Monitoring

Monitoring

- Asset Monitoring
- Security & Surveillance
- Remote Service Alarming
- Smart Robotics
- Smart Metering

Manufacturing and Quality

- On-site Manufacturing
- Maximum control and flexibility
- 100% functional testing
- Global Forward and Reverse Logistics
- Custom Manufacturing
- Activation, provisioning & testing
- Highly trained and cross-trained workforce with an average tenure of more than 15 years
- ISO 9001: 2008 certified
- ISO: 13485 certified, a step above ISO: 9000
 - Traceability of parts down to the component level



Why MultiTech?

Superior Quality

From our US-based manufacturing plant to our countless product and process certifications, we're committed to the utmost quality in everything we do.

That's why you can find more than 22 Million MultiTech products performing essential duties for businesses around the globe.

Service Excellence

From our comprehensive portfolio to the extensive reach of our distribution network, MultiTech is easy to choose and easy to buy.

Thanks to in-house manufacturing and custom design services; broad-reaching expertise and fast, agile development we deliver customization and flexibility you simply can't get anywhere else.

History of Innovation

From the earliest analog systems, to the cellular heart of today's industrial Internet of things to the latest low-power wireless technology, MultiTech has consistently connected businesses in ways previously unimaginable – and has been doing so for more than 40 years. We have no intention of slowing down.

We're continuing our legacy of firsts with the world's first commercially deployable LoRA-based suite of communications devices.

Agenda

1. Low-Power, Wide Area (LPWA) IoT Market
2. Conduit Intelligent Gateway Platform
 - A. mCards for Conduit
 - B. mLinux vs. Node Red User Target Profile
 - C. mDot and the ARM® mbed Partnership
 - D. mDot Value and Intelligence at the Edge
 - E. DeviceHQ
 - F. Pricing & Delivery
 - G. Common Conduit Platform Ordering Scenarios

BOCON
博控自动化
inquiry@bocon.com.cn
www.bocon.com.cn
Tel: 010-51663110

Low Power Wide-Area IoT Market

The Internet of Things Market is Large and Growing Fast

Estimated that **14 Billion** devices are connected today

- **50 Billion connected devices by 2020** – Cisco, Ericsson
- **1.5 Trillion by 2030** – Samsung
- **300 Billion IoT supplier revenue** – Gartner
- **7.1 Trillion IoT solutions revenue** – IDC
- **5 Billion connection by 2022 will be on LPWA** – Strategy Analytics



LPWA target requirements

Low-Power, Wide-Area (LPWA)

Many of the next wave of devices to be connected will be fixed location sensors that:

- Must operate on batteries for 7 to 10 years
- Will send less than 1,000 bytes of data a day
- Must be extremely low cost to buy and operate
- Indoor units will need good building penetration
- Outdoor units will need exceptional range
- Security will be a major issue



A New Network – LoRa®

To meet the needs of new IoT devices, MultiTech has partnered with Semtech, ARM®, IBM and others to deliver a low cost network platform using LoRa

Semtech provides the LoRa radio chip

- 15 mile outdoor range
- 2 mile indoor range

ARM® provides mBed operating system

- Intelligence at the edge

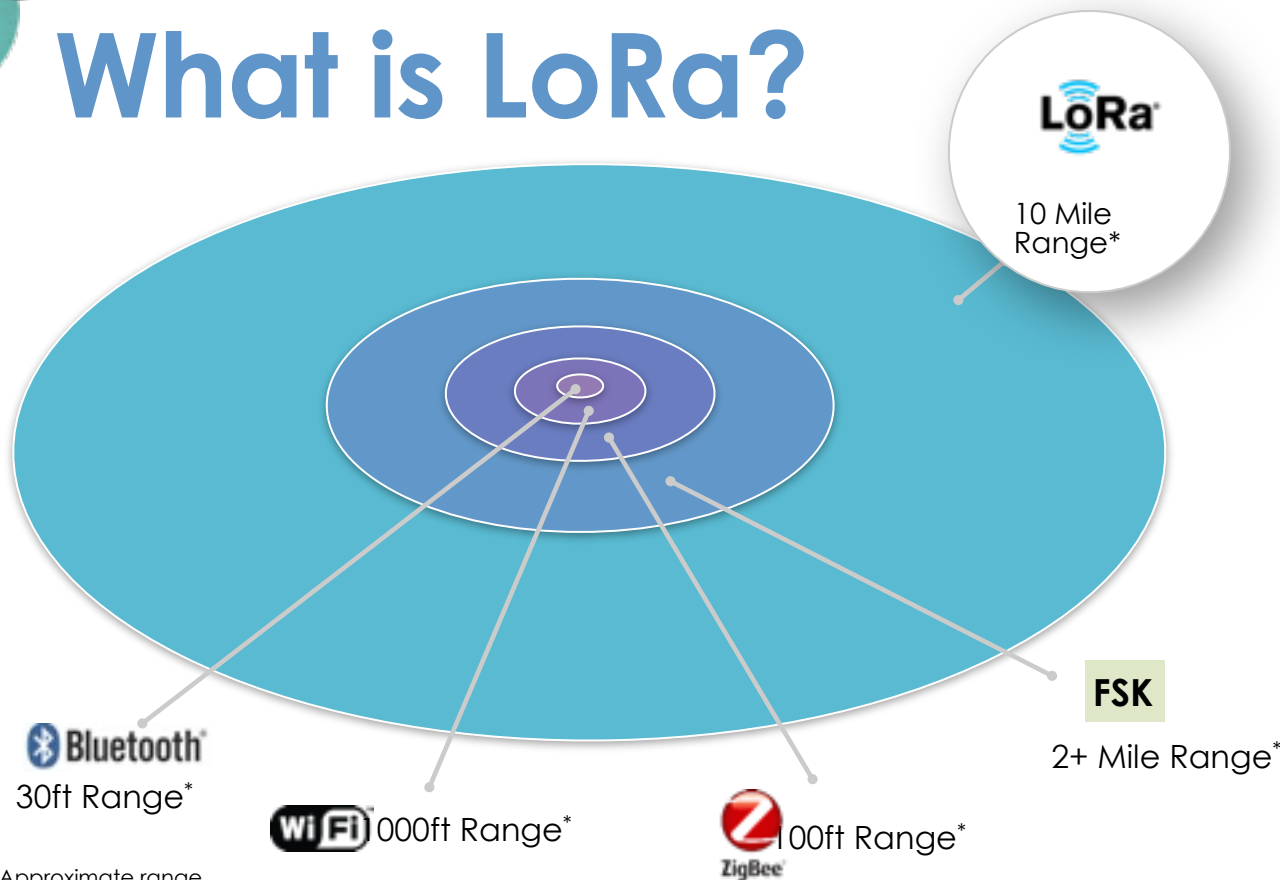
IBM Research

- Software and platform



The LoRa® name and associated logo are trademarks of Semtech Corporation or its subsidiaries.

What is LoRa?



* Approximate range



Long range and low power

At +14dbm output power, 868MHz

- In Sub-GHz >5km dense urban
>13km suburban > 80VLOS

Robust communication

- Not susceptible to interference from Wi-Fi, Bluetooth, GSM, LTE, etc

High accuracy localization and ranging

- Modulation format permits high accuracy localization
- Not RSSI based and accounts for multi-path and fading
- Permits high volume additional features

Improved network capacity

- Connect more nodes
- Additional capacity for features

IoT Needs a New Network and its LoRaWAN

Feature	LoRaWAN Now	Sigfox Now	LTE Cat-1 2016	LTE Cat-0 2018	LTE Cat-M 2020??
Modulation	DSS with Chirp	UNB / BPSK	OFDMA	OFDMA	OFDMA
Rx bandwidth	125 KHz	200 Hz	20 MHz	20 - 1.4 MHz	200 KHz
Data Rate	287 - 22K bit/sec	100 bit/sec	10 Mbit/sec	1 Mbit/sec - 200 Kbit/sec	10-20K bit/sec??
Max. # Msgs/day	Unlimited	UL: 140 msgs/day DL BC: 4 msgs/day	Unlimited	Unlimited	Unlimited
Max Output Power	20 dBm	20 dBm	23 - 46 dBm	23/20 dBm	20 dBm
Link Budget	154 dB	151 dB	130 dB+	146 dB	150 dB
Communication channel	Half Duplex	Quasi Half Duplex	Full Duplex	Half Duplex	Half Duplex
Power Efficiency	Very High	Very High	Low	Medium	High
Complexity	Very Low	Very Low	High	Medium	Low
Coexistence	Yes	No	Yes	Yes	Yes

LPWA Applications

Smart City

- Metering and sub metering
- Parking
- Security and fire alarms

Smart Agriculture

- Environmental sensors

Building Management

Connected Devices: Access

Source: Semtech

LAN

Short Range
Communicating Devices



Well established standards

Good for:

- Mobile
- In-home
- Short range

Not good for:

- Battery life
- Long range

Cellular

Long Range w/ Power
Traditional M2M



Well established standards

Good for:

- Long range
- High data-rate
- Coverage

Not good for:

- Battery life

Low Power WAN

Long Range w/ Battery
Internet of Objects



Emerging PHY standards

Good for:

- Long range
- Long battery
- Low cost

Not good for:

- High data-rate



Mission:

To standardize Low Power Wide Area Networks
to enable IoT, M2M, smart-city and industrial applications

- Publicly launched at MWC, Barcelona 2015
- Recognized as one of the fastest growing Technology Alliances ever.
- Membership includes broad cross section of telecommunication industry

Partial Membership List

- Semtech
- IBM
- Kerlink
- Bouygues Telecom
- Actility
- Orbiwise
- MicroChip
- IMST
- KPN
- Stream Technologies
- Espotel
- Fastnet
- MultiTech
- Sensing Labs
- Proximus
- Swisscom
- Echologics (Div. of Mueller)
- NKE
- LinkLabs
- Belgacom
- Sagemcom
- 1M2M
- Alpwise

MultiTech and the LoRa® Alliance

MultiTech is one of the initial members of the Alliance

MultiTech is a key member of 3 of the 4 Steering Committees:

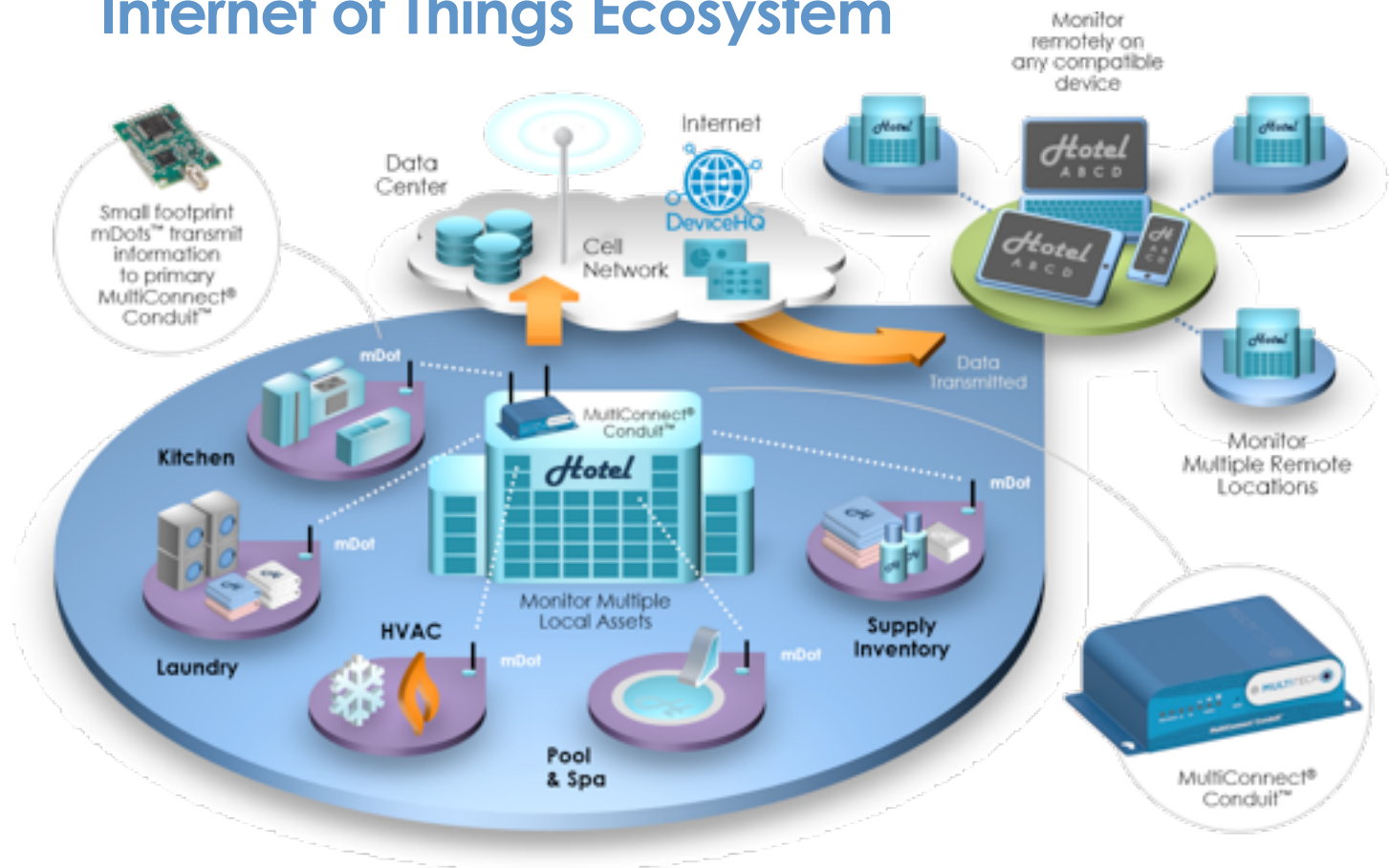
- Strategy
- Technology
- Certification



Conduit

MultiConnect[®] Conduit[™]

Internet of Things Ecosystem



MultiConnect® Conduit™

Connecting the Internet of Things

Manage Thousands of End Points

- High throughput programmable cellular gateway
- Long range, low power mDots up to 10 miles range

Flexible IoT Gateway

- Optimized with your preferred radio & interfaces
- Open & highly programmable Linux, Java & Node.js
- Graphically develop applications in Node-RED


Optional mCards

- Connect any asset with mCards
- GPIO, Serial, Semtech LoRa™, & Ethernet, WiFi/BLE....

First Application Store for Things

- Customize, deploy, manage & scale globally





mCard

MultiConnect[®] mCard[™]

mCard Now & Roadmap

At Launch

- LoRa – 868 MHz (EU) or 915 MHz (NAM)
- Serial RS-232/485 both DTE and DCE variants
- GPIO

2015 Planned Cards

- Ethernet
- XBee footprint interface
- Wi-Fi and Bluetooth Low Energy
- GPS Tracker (GNSS, Motion detection only and GNSS with Motion)

Being Considered

- CAN bus
- Active RFID ...

LoRa Performance in mDots & mCards

mCard		
	North America	Europe
Max Transmitted Power Output (TPO)	26 dBm	14 dBm
Max Receive Sensitivity	-137 dBm	-137 dBm
Link Budget*	<ul style="list-style-type: none"> 152 dB Point-to-Multipoint 147 dB 	<ul style="list-style-type: none"> 152 dB Point-to-Multipoint 147 dB
	* Calculation assumes two 0 dBi antennas (Greater link budget possible with higher antenna performance)	* Calculation assumes two 0 dBi antennas (This is the maximum link budget possible)
	Note: Point-to-Multipoint utilizing MultiTech Gateway with MT-LORA accessory card	
Max Effective Isotropic Radiated Power (EIRP)	36 dBm	10 dBm

mDot		
	North America	Europe
Max Transmitted Power Output (TPO)	15 dBm	14 dBm
Max Receive Sensitivity	-130 dBm	-137 dBm
Link Budget*	<ul style="list-style-type: none"> 145 dB Point-to-Multipoint 147 dB 	<ul style="list-style-type: none"> 151 dB Point-to-Multipoint 147 dB
	* Calculation assumes two 0 dBi antennas (Greater link budget possible with higher antenna performance)	* Calculation assumes two 0 dBi antennas (This is the maximum link budget possible)
	Note: Point-to-Multipoint utilizing MultiTech Gateway with MT-LORA accessory card	
Max Effective Isotropic Radiated Power (EIRP)	36 dBm	10 dBm

MultiConnect[®] Conduit[™]

Software Options
mLinux vs. Node-RED

mLinux™ vs. Node-RED User Target Profile

Application Development Tailored to Individual Needs

mLinux – Customized & Highly Integrated Development Target

- Robust development environment for sophisticated **software developers**
- Complete firmware control enables full customization
- Tight integration facilitates easy extension of the IoT application to network edge
- Customer specific SKU's for high volume easy fulfillment with low touch install

Node-RED – Application Enablement Platform

- Simple GUI enables rapid application development by **IT/System engineers**
- Suite of nodes to customize common procedures (input functions/outputs)
- Ideal for quickly building prototypes or proof-of-concepts
- Easy and quick to deploy, manage and scale application

Linux Distribution

MultiConnect® Conduit™

Open Embedded/Yocto

- Linux Build Tools
- Distribution Customization
- Linux Kernel 3.12 & Yocto1.6

Application Development

- Extensive Language Support with Java, Perl, Python, C/C++, Ruby, JavaScript, etc...
- Packages including SQL database, web server, core utilities, etc...

Product Customization

- Custom SKU development
- Custom firmware flashing
- Custom overlay and kitting



Application Enablement - Node-Red

Just the Beginning

Your Data Your Way

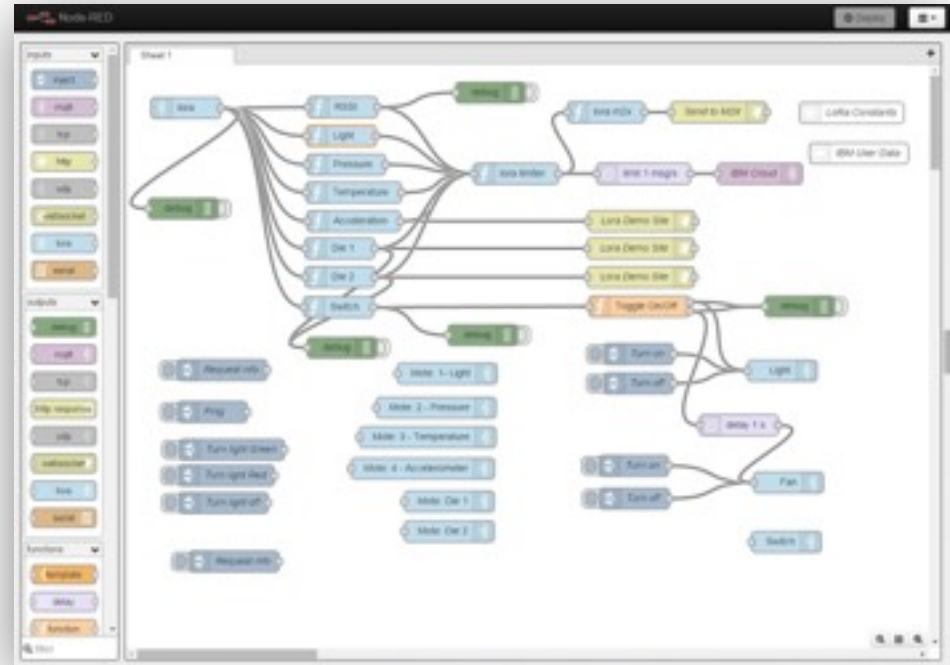
- Same development language from gateway to web
- Graphical programming

Managed Solution (DeviceHQ)

- Device Management
- Application Store

Structured Customization

- Library of defined nodes
- Nodes = inputs, functions or outputs
- Nodes have structured variables
- Nodes can be created by users





mD+

MultiConnect® mDot™

MultiConnect® mDot™ - Long Range, Low Power RF Connecting the “Things”

First mbed Programmable ISM Module Platform

- CPU – STMicro STM32F411
Memory - 512K Flash, 128K RAM, 1M SPI Flash
- Semtech LoRa™ single channel 868 or 915 MHz
- Operate for years on a battery, based on activity

Excellent In-building Performance

- Range up to 10 Mile line of sight, 1 to 3 Miles into buildings

2-Way / Duplex Communication Channel

- More than just sensor reporting, RS485, Roadmap to 6LowPan
- Confirmation of delivery, critical for emergency apps
- Data rates 293bps-20Kbps+ LoRa up to 300Kbps FSK

Connect Most Anything ...

- FCC/CE end-certified module with mbed libraries for developers
- Future capability: customize and manage end point behavior remotely

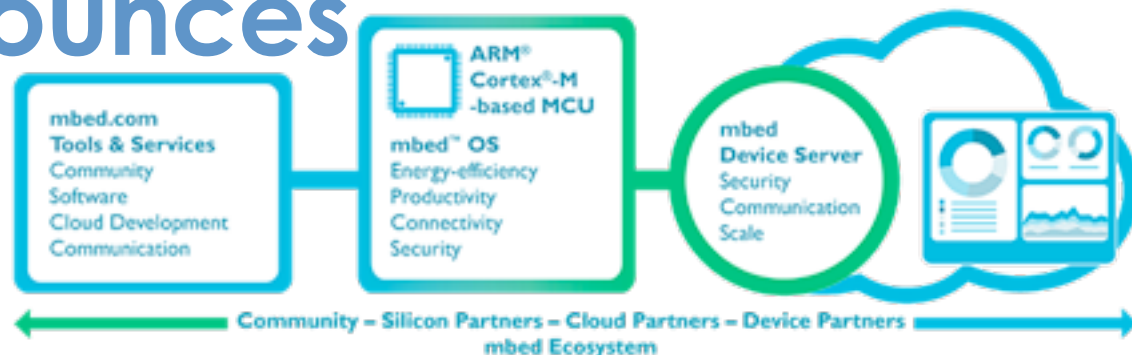


mDot Interfaces:
**Analog, Digital,
UART, I2C, & SPI**

ARM® Announces

ARM® mbed™

Let's Connect Everything



ARM® and its Partners share a disruptive vision where the creation and deployment of commercial, standards-based Internet of Things devices is possible at scale.

- MultiTech MultiConnect® mDot is the world's first mbed deployable product
- ARM® will be a co-marketing partner promoting our technology

mDot Value

Today

- An intelligent LoRa end point Platform/Module
- Easily integrates into assets
 - Especially with legacy assets without a processor or memory
- Reduces overall BOM
- Low risk purchase - IBM LoRaWAN compliant
 - mDot will work out of the box with MultiTech Conduit Gateways and other Gateways
- Powerful ARM® Cortex®-M4 series processor
 - Why is this important? We are driving the mbed evolution
 - Rich development environment via ARM's mbed ecosystem

Platform

Roadmap

Firmware Over The Air (FOTA) =
no truck rolls on the roadmap

Hassle-free, low touch
installation

IP to the edge means no need
for middleware expertise
Discovery and capability
exchange

Secure connectivity and
trusted end points

Why Push Intelligence to the Edge?

Gateway applications can manipulate raw sensor data locally before sending information to a cloud storage platform

Faster processing of raw data


Efficient use of data channel. Upload only "rich" data, not all data.



Intelligent Distributed
IoT Computing



Traditional IoT
Cloud Computing



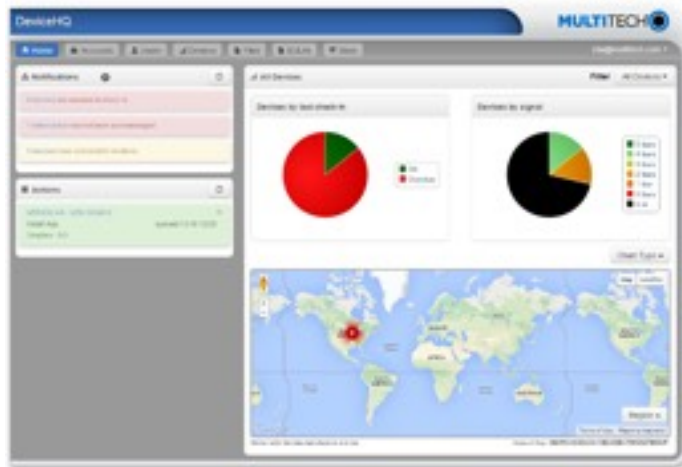
Navico™

What is DeviceHQ?

DeviceHQ is a web based suite of tools to manage devices and custom applications for remotely deployed gateways.

Device Management Tools

- Dashboards to quickly gauge health of devices
- Tools to remotely manage devices (custom configurations, firmware upgrades, etc.)
- Ability to provision new devices and simplify deployments



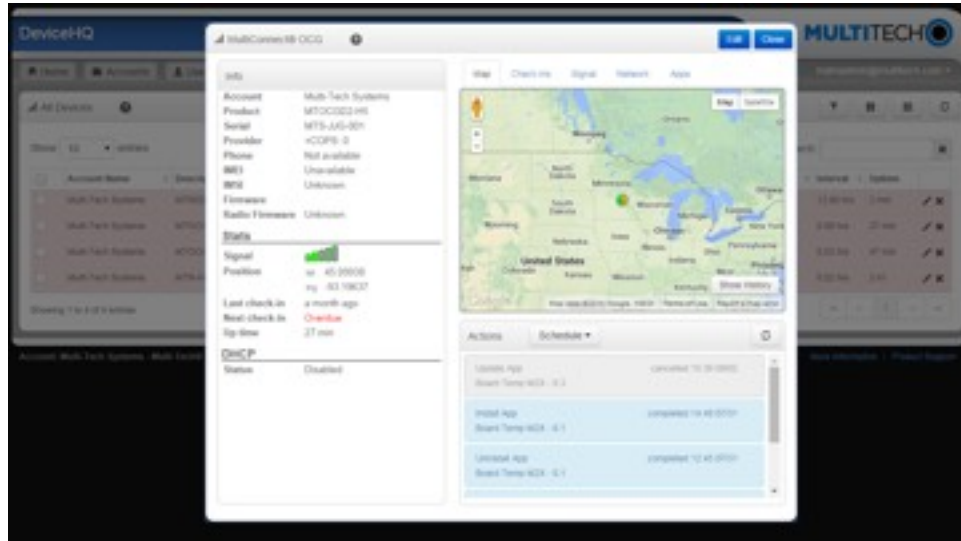
Application Store and Application Management

- Browse applications or build your own
- Deploy applications to remote devices
- Customize application settings for each device remotely



DeviceHQ

Same powerful device management platform as the current MDM site



Conduit and rCell Support

- Signal to Noise Ratio, neighbor cells, up time & error reporting
- Firewall
- Routing and IP configuration deployment
- Remotely upgrade firmware, change configurations
- Monitor device status, statistics and notifications
- Act proactively – reduce downtime
- Aid in trouble shooting
- View location of

Why DeviceHQ?

Reduce cost and complexity of device management

- Simplify field deployment of gateways with zero touch provisioning
- Manage the health of deployed assets from a single web based application
 - Reduce truck rolls
- Update firmware and custom applications remotely

Enable intelligence at the edge of the network

- Process events at the point of incident, not at a central server
- Increase efficiency of data channel
- Take action locally even when no network connection is available

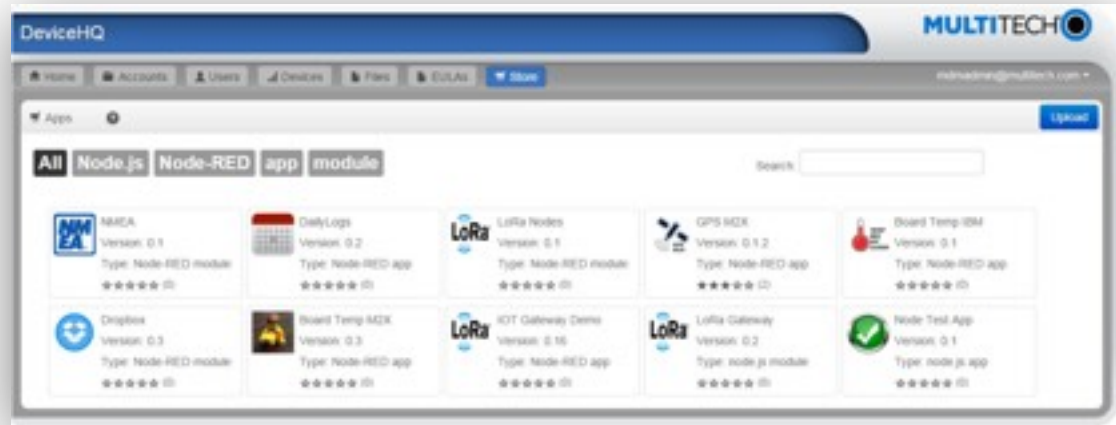
Open to Developers

- Third party developers can build and deploy their application on DeviceHQ

DeviceHQ

Familiar Interface

- Customers are familiar with the concept of purchasing an app
- Tools to search, review and select apps to a user's account



Public and Private Apps

- Private apps are only available to the customers who developed them
- Public apps are available to all store users

DeviceHQ Includes:

Quick Start Guide

- How to create a DeviceHQ account
- How to associate their Conduit with their account
- Guide to creating a Node-RED application
- How to upload and manage their application in DeviceHQ

Detailed Online Help

Detailed instructions for using DeviceHQ tools and features

Code Snippets for Node-RED

Guide for creating custom Node-RED nodes

Delivery

MultiConnect[®] Conduit[™] Platform



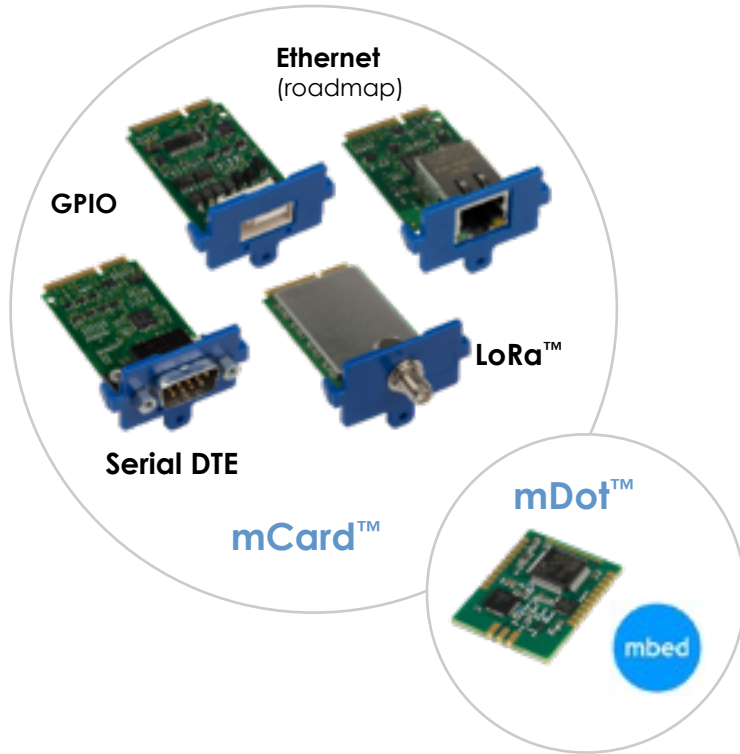
MultiConnect Conduit		Description	Mass Production
MTCDDT-H5-210L-DK		HSPA+	May 29 th 2015
MTCDDT-210L-DK		No Radio	May 1 st 2015
MTCDDT-H5-210A-DK		HSPA+	Final sample June. MP August
MTCDDT-210A-DK		No Radio	Final sample June. MP August

210x: 210L is for mLinux 210A is for Node Red

Serial and GPIO support – April 2015
LoRa support in Conduit – May 2015
DeviceHQ support – August 2015

Includes: 9V wall adaptor; US, EU, UK blades;
Ethernet and USB cables; radio antennas

Utilizing MultiConnect® mCard™



mCards	Estimated MSRP	Mass Production
Serial MTAC-MFSER-DCE MTAC-MFSER-DTE		April 2015 (DTE shown)
GPIO MTAC-GPIO		April 2015
LoRa MTAC-LORA-915		June 2015
mCard Accessories*		
Antenna AN868-915A-1HRA		April 2015
GPIO Cable CA-MTAC-GPIO		April 2015
Serial Cable DTE/ DCE		April 2015

***Prices may change before launch. You will be informed of any price change**

MultiConnect® mDot™



Developer Kit using MTDOT-xxx-X1P-SMA-1	MSRP	Mass Production
MTUDK2-ST-MDOT		April 2015

Includes SMA antenna and USB cable

mDot	
Programmable mDot MTDOT-xxx-X1P-SMA-1	
Surface mount MTDOT-xxx-M1-TRC-1 (100)	
Surface mount (not shown) MTDOT-xxx-M1-UFL-1 (100)	
PINNED (not shown) MTDOT-xxx-X1-UFL-1 (50)	
PINNED (not shown) MTDOT-xxx-X1-SMA-1 (50)	

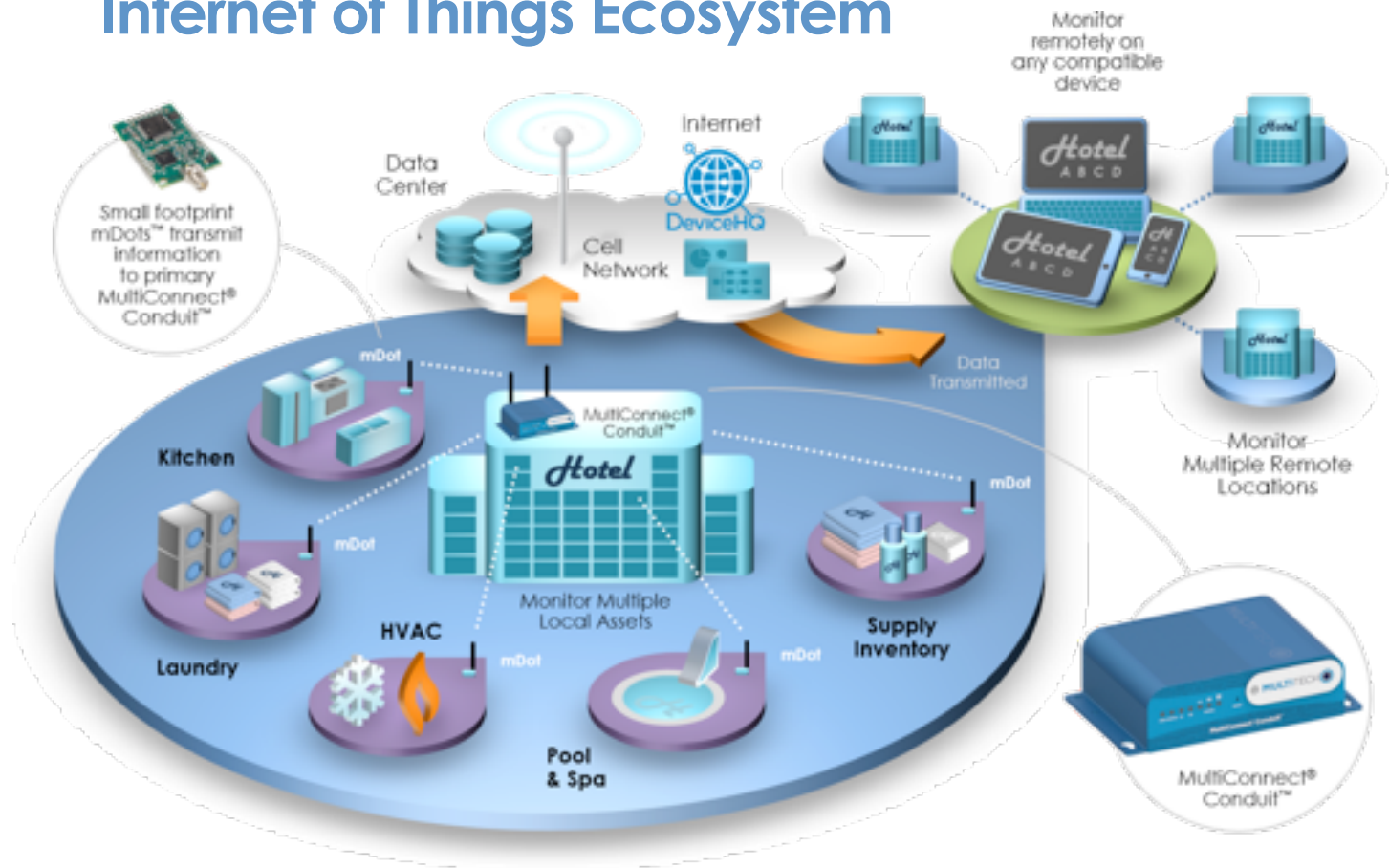
xxx is 915 or 868 for the base frequency range.

868 MHz for EU and 915MHz for NAM
Release date August (EU)/July (NAM) 2015
-1, -50 (X1), -100(M1): quantity per package

Common Conduit Platform Ordering

Example Platform Build	Part Numbers	Quantity	MSRP
Conduit HSPA+ LoRa 915MHz Graphical programming target	MTCDT-H5-210 A -DK MTAC-LORA-915	1 1	
Accessories mCard Antenna	AN868-915A-1HRA	(1Pk)	
			TOTAL Price
Conduit - No Radio - mLinux developer target – GPIO interface	MTCDT-210 L -DK MTAC-GPIO	1 1	
			TOTAL Price

Internet of Things Ecosystem



Why MultiTech?

Superior Quality

From our US-based manufacturing plant to our countless product and process certifications, we're committed to the utmost quality in everything we do.

That's why you can find more than 22 Million MultiTech products performing essential duties for businesses around the globe.

Service Excellence

From our comprehensive portfolio to the extensive reach of our distribution network, MultiTech is easy to choose and easy to buy.

Thanks to in-house manufacturing and custom design services; broad-reaching expertise and fast, agile development we deliver customization and flexibility you simply can't get anywhere else.

History of Innovation

From the earliest analog systems, to the cellular heart of today's industrial Internet of things to the latest low-power wireless technology, MultiTech has consistently connected businesses in ways previously unimaginable – and has been doing so for more than 40 years. We have no intention of slowing down.

We're continuing our legacy of firsts with the world's first commercially deployable LoRA-based suite of communications devices.

Thank you!

Multi-Tech Systems, Inc.

For more info, please contact

Mike Kydd
+1 612-845-4972
mike@multitech.com

www.multitech.com
www.multitech.net

BOCON
博控自动化
inquiry@bocon.com.cn
www.bocon.com.cn
Tel: 010-51663110